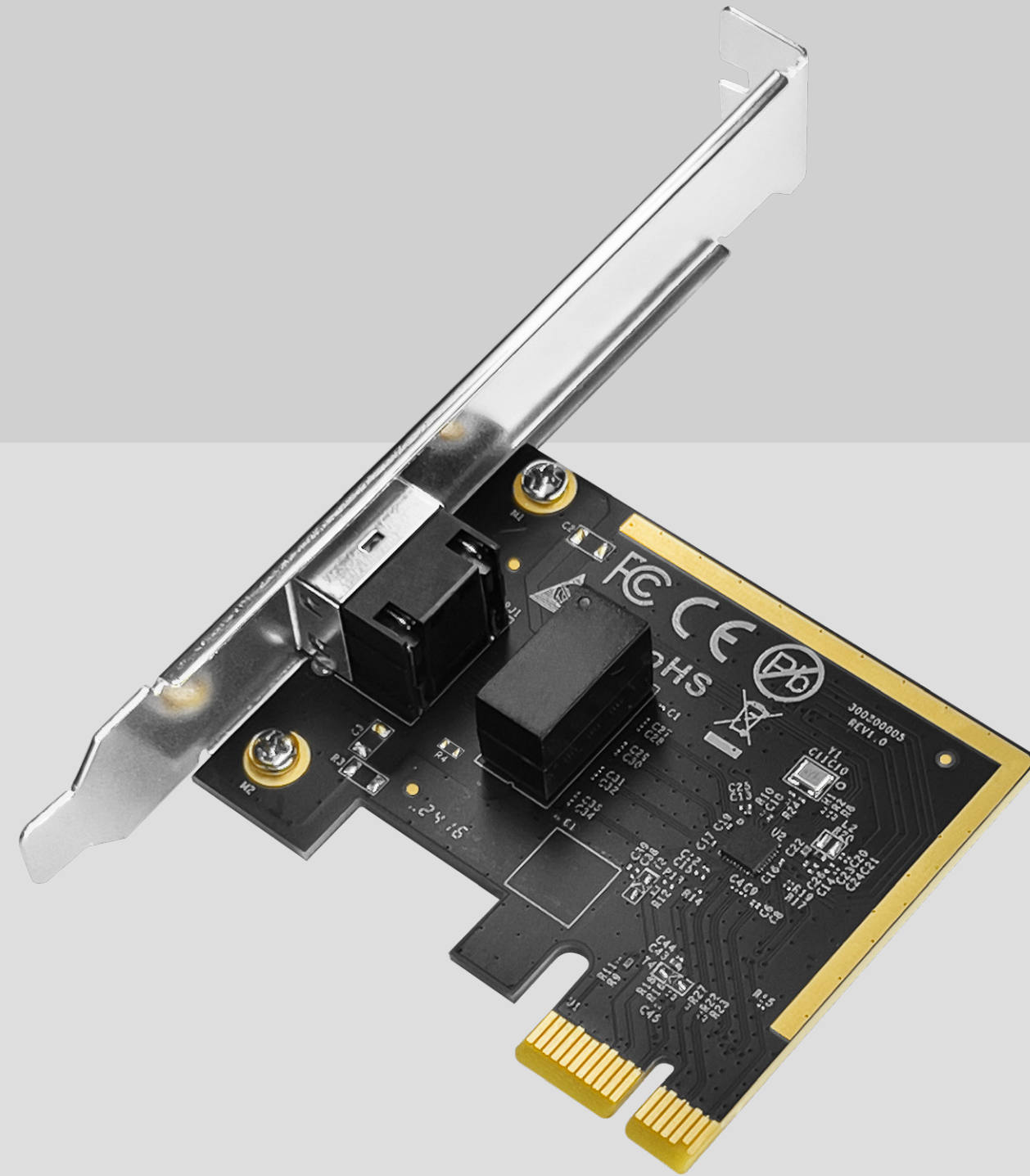




Model: PE10

Gigabit PCI-E Ethernet Adapter



[Datasheet](#)

Highlights

A NIC for equipping your PC with Gigabit wired connectivity, featuring WoL function.

- 10/100/1000 Mbps Ethernet Port
- Wake on LAN, Flow Control
- Standard/Low-Profile Bracket
- Windows XP or later / Linux / DOS

Package Content

- PE10
- Low-Profile Bracket
- Installation Guide

Hardware Features

CPU	Chipset	RTL8111H
Interfaces	Gigabit RJ45 Ports	1
	LED	Speed/Link/ACT of Ethernet Port
Requirements	Hardware Requirement	Requires a PCI-E 1x or higher slot on the motherboard for powering and the Ethernet function.
	Compatible OS	Windows XP/7/8/8.1/10/11 WindowsServer 2003/2008/2012/2022 Linux, DOS
	Driver Installation	Manual driver installation is required. Driver is available from the Download Center.
Reliability	Environment	Ambient Operating Temperature: 0 °C ~ 70 °C (32 °F ~ 158 °F)
		Storage Temperature: -40 °C ~ 70 °C (-40 °F ~ 158 °F)
		Humidity: 10% ~ 90% non-condensing
		Storage Humidity: 5% ~ 95% non-condensing
Certifications	FCC, CE	
Mechanical	Dimension	67.3×56×17 mm
		2.65×2.2×0.67 inches